



JETION
SOLAR

visionary green energy

JT180 S 125 Monocrystalline 125 x 125 Module

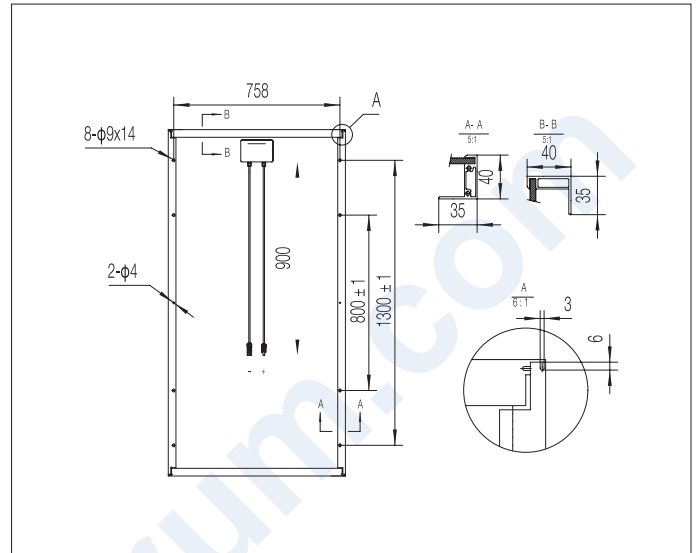
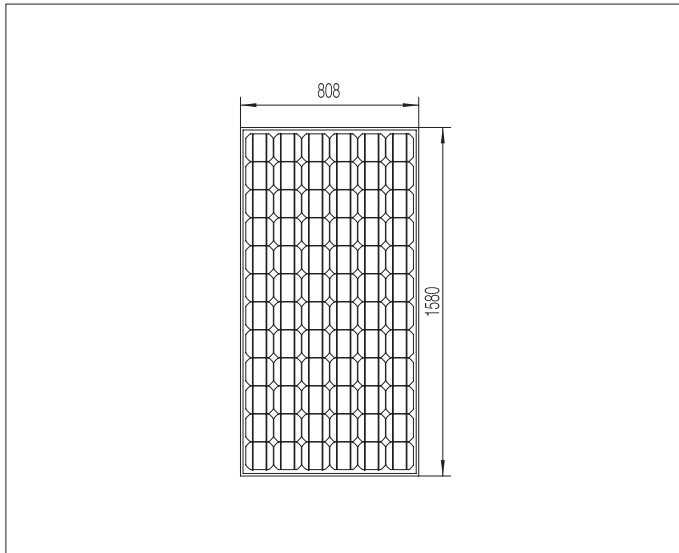
Datasheet / Module

JT170 (35) S 1580 x 808 / JT175 (35) S 1580 x 808 / JT180 (36) S 1580 x 808
JT185 (36) S 1580 x 808 / JT190 (37) S 1580 x 808

www.jetion.biz

JT180 S 125 Monocrystalline 125 x 125 Module

Mechanical Specifications



Mechanical Characteristics

Certificates	TUV (IEC 61215.2 & Safe Class II) , VDE (IEC 61215.2 & IEC 61730), UL1703 3rd Ed, CE
Cell (mm)	125 125
Dimension (mm)	1580 808 40
No of cells	6 x 12 / 72
Weight (kg)	15.5
Cable Type, Diameter and Length	4mm², TUV certified, 1000mm
Type of Connector	Compatible Type IV
Junction box	IP65
No.of Draining Holes in Frame	10
Glass,Type and Thickness	High Transmis, Low Iron, Tempered Glass 3.2mm
Bypass-Diods	3

Limits

Tolerance	Operating Temperature	Mechanical Load	Maximum Series Fuse Rating	Dielectric Insulation Voltage
±3%	-40 ~ +85	< 5400 Pa	10 AMPS	3000V

Packaging Configuration

Packing Configuration	Quantity/Pallet	Loading
2 pcs/box or 24 pcs/box	50 pcs/pallet	700 pcs/40ft

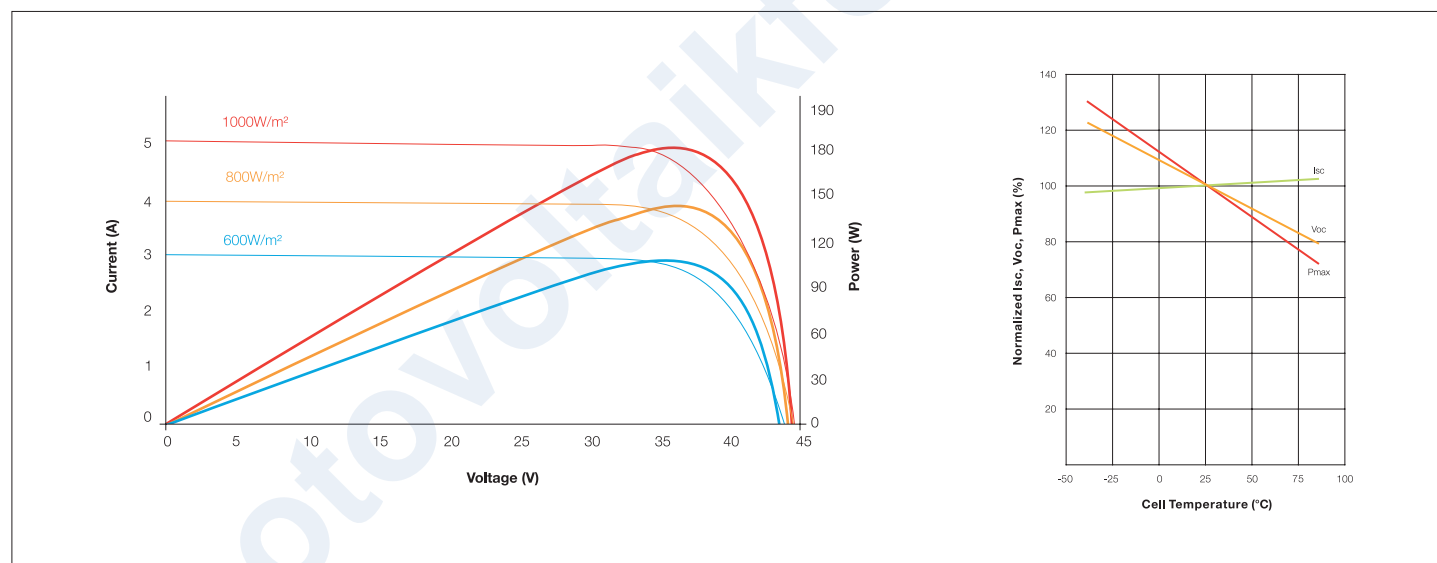
JT180 S 125 Monocrystalline 125 x 125 Module

Electrical Characteristics

*Cells with small angle used. Cell area is 154.75 cm²/cell. Different appearance of the modules.

type model	JT170(35) S1580 808	JT175(35) S1580 808	JT180(36) S1580 808	JT185 (36) S1580 808	JT190 (37) S1580 808
Max System Voltage (V)	600V (UL / 1000V (IEC))				
Maximum Power at STC P _{max} (W)	170	175	180	185	190
Optimum Operating Voltage V _{mp} (V)	35.2	35.3	36	36.27	36.5
Optimum Operating Current I _{mp} (A)	4.83	4.96	5	5.1	5.2
Open - Circuit Voltage V _{oc} (V)	43.8	44.2	44.8	45	45.2
Short - Circuit Current I _{sc} (A)	5.14	5.2	5.3	5.5	5.6
Cell Efficiency (%)	15.9	16.4	16.8	17.3 / 16.6*	17.8 / 17*
Module Efficiency (%)	13.3	13.7	14.1	14.5	14.88
Maximum Reverse Current	Do not apply external voltages larger than V _{oc} to the module				

I-V Curves



Temperature Coefficients

V _{oc}	I _{sc}	P _{max}
-0.347 %/°C	0.055 %/°C	-0.48 %/°C

Nominal Operating Cell Temperature NOCT
47±2°C

All specified Parameters are at STC 25°C Ambient, 1000W/ m² irradiance and AM 1.5.

Jetion reserves the right to make specification changes without notice.

Module

JT180 S series is a medium-powered module product ideal for roof top or ground mounted large, medium or small sized off-grid and on-grid solar power systems where long term economics, reliability and environmental issues are of a real concern.

JT180 S have gone through various rigorous in-house reliability tests, i.e., LID under natural sunlight as well as artificial sunlight to guarantee the rated power output.

Key Features

- 72 Mono-Crystalline solar cells
- Unique frame design to reinforce sealing and to prevent freezing and warping
- Strong aluminum frames to strengthen the load hold and to stand against high wind
- Special mounting holes on the frames for long and short side mounting
- High transparency low iron tempered glass with enhanced stiffness and impact resistance
- Advanced EVA encapsulation system with multilayer backsheets to better product modules

Applications

- Large on and off-grid solar power stations
- Commercial/industrial building roof-top systems
- Residential roof-top systems
- Other industrial and commercial applications

Warranty

- 25 years limited warranty on power output
90% power output assurance for 10 years, and 80% power output assurance for 25 years.
5 years product warranty
Please refer to warranty certificate for warranty conditions in detail.

Certificates

- IEC 61215.2 / IEC 61730 / UL1703.3rd Ed



JETION SOLAR EUROPE

Industriering 10

FL-9491 Ruggell

Fon: +423 265 3830

Fax: +423 265 3839

E-Mail: info@jetion.biz

Web: www.jetion.biz

JETION SOLAR CHINA

No. 1011, Zhencheng Rd.

Jiangyin 214443, P.R. China

Fon: +86 510 86687319

Fax: +86 510 86687315

E-Mail: marketing@jetionsolar.com

Web: www.jetionsolar.com