

JT-185M

Photovoltaic Solar Module

ELECTRICAL CHARACTERISTICS

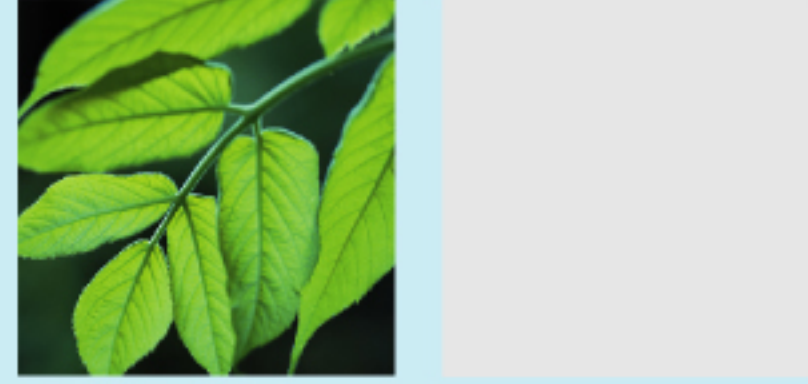
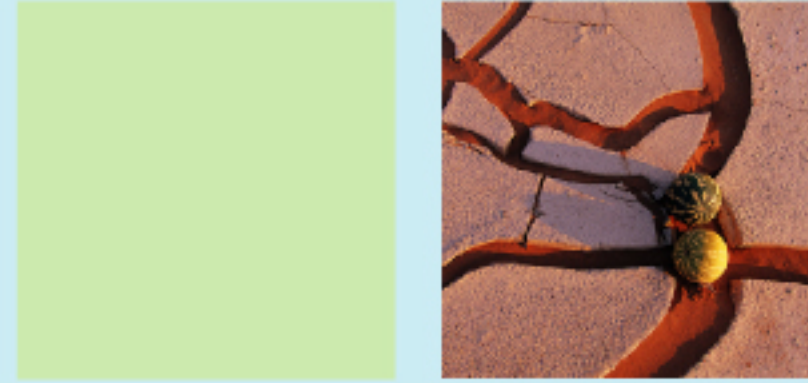
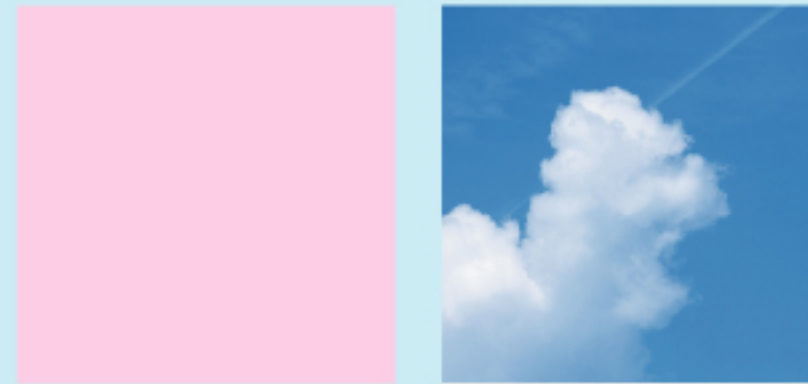
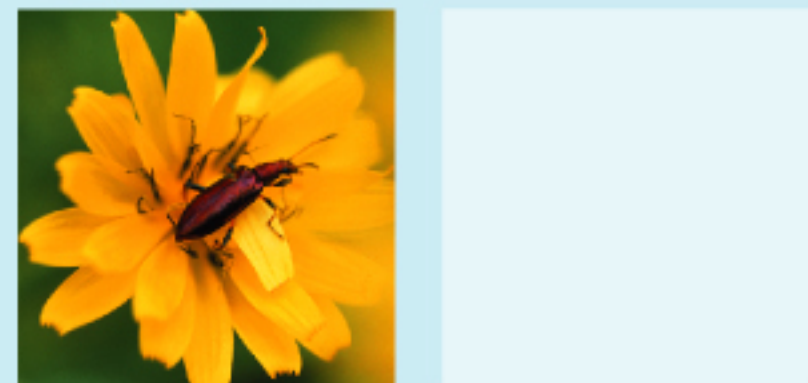
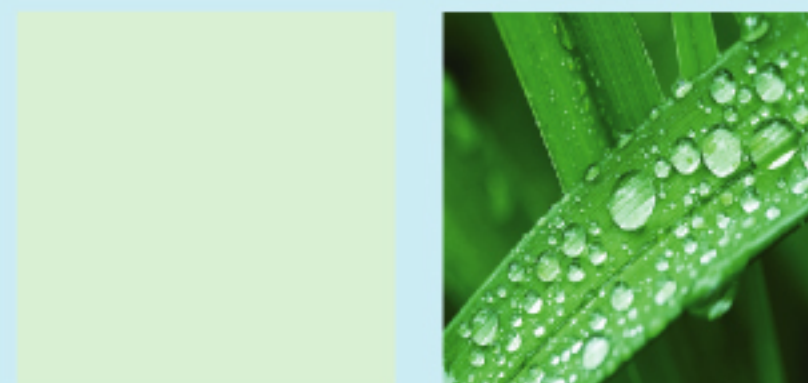
ITEM	JT-185M
CELL TYPE	125 X 125 MONO SOLAR CELL
Maximum Power (Wp)	185
Maximum Power Voltage (Vm)	36.0
Maximum Power Current (Im)	5.14
Open circuit Voltage (Voc)	43.2
Short circuit Current (Iso)	5.76
Cell Efficiency (%)	17.5%
Module Efficiency (%)	14.4%
Maximum Series Fuse	10A
Number of cells (pic)	72
Maximum system voltage (VDC)	1000
Temperature coefficient of Pm	-0.37%/ °C
Temperature coefficient of Voc	-0.34%/ °C
Temperature coefficient of Isc	0.09%/°C
Output tolerance (%)	+/- 5%
FF (%)	>= 72%
Standard Test conditions	STC:AM 1.5, 1000w/m ² , Module Temperature 25°C

MECHANICAL CHARACTERISTICS

Size of module A x B x C (mm)	1581X809X40
Installing hole E x F (mm)	945X765
Cable Length G (mm)	900
Weight per piece (Kg)	15.7
Packing Configuration	2 pcs per carton
Pallet Quantity	38 pcs/pallet
Loading Capacity	532 pcs/40ft;266 pcs/20ft

ABSOLUTE MAXIMUM RATINGS

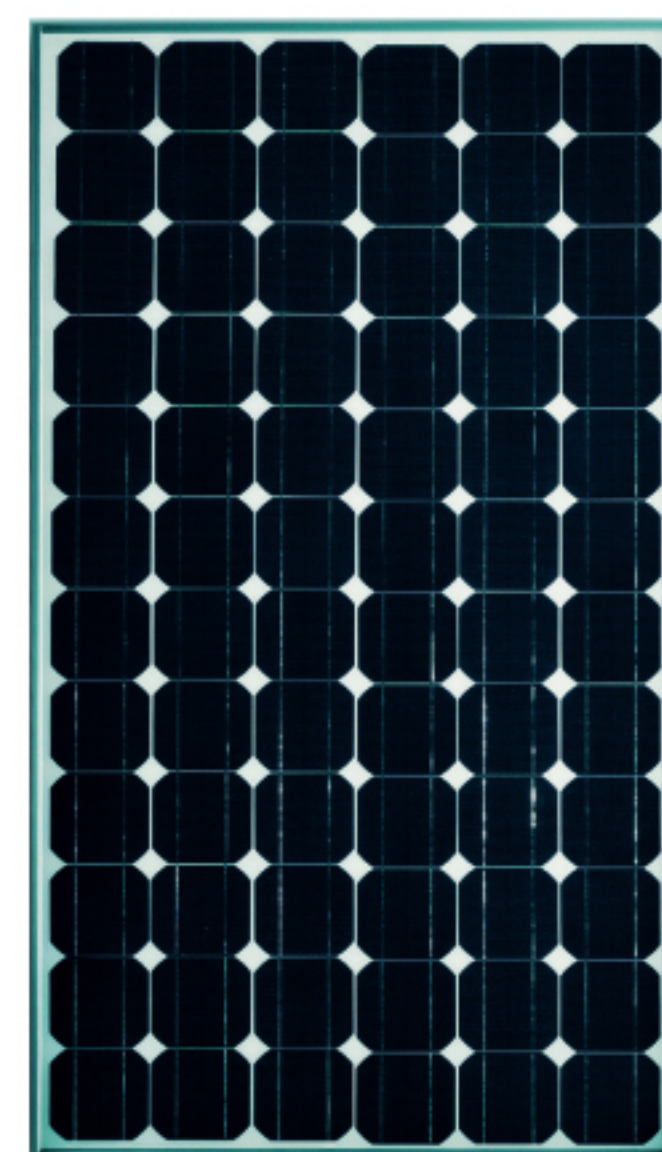
Operating Temperature	-40°C ~ +85°C
Storage Temperature	-40°C ~ +85°C
Dielectric Insulation Voltage	2400VDC max



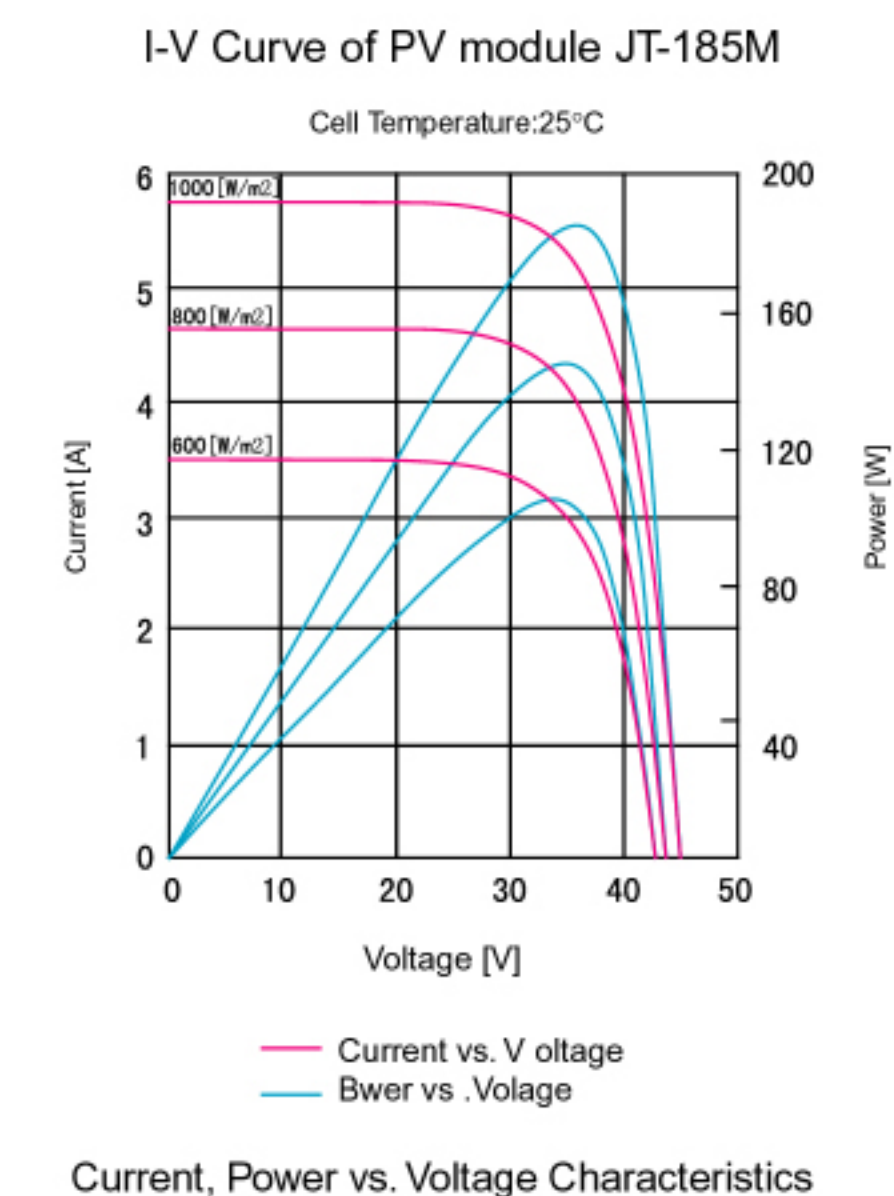
JT-185M

Photovoltaic Solar Module

Picture



I-V Curve



Dimensions

