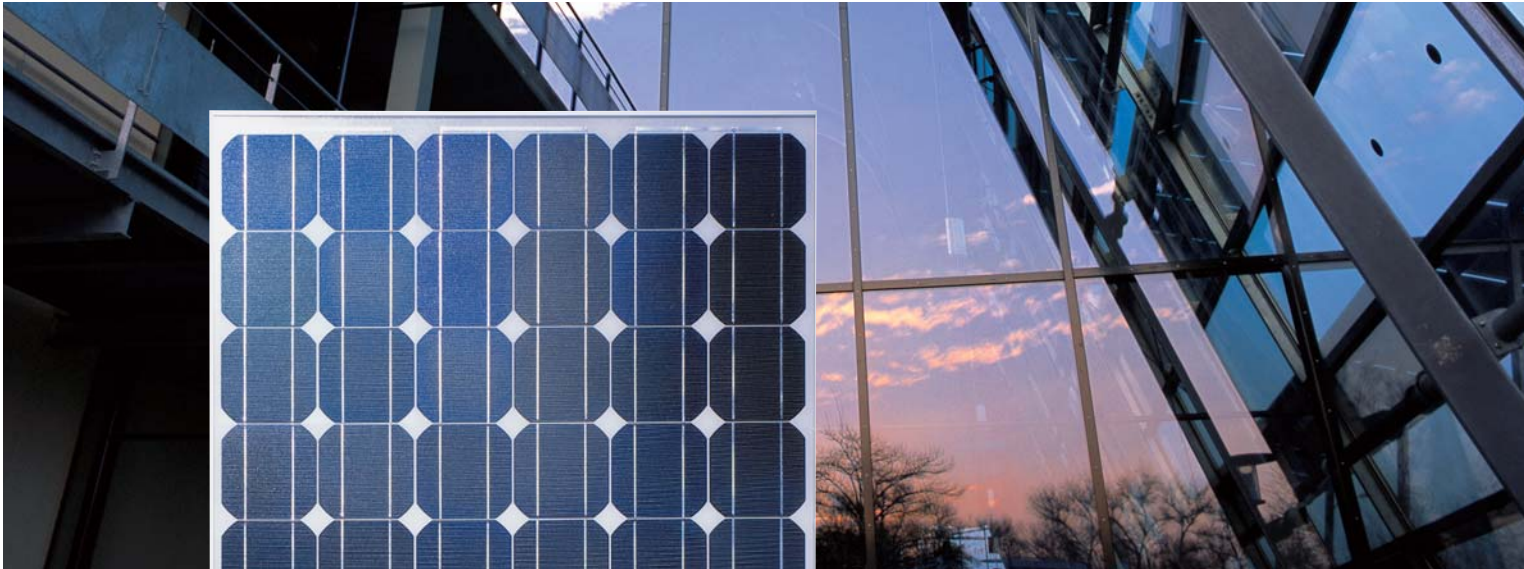


# Solar Module

## Solar-Fabrik Series SF 150/2A



### Top quality across the entire range:

- Long term stability by use of highly transparent, specially doped solar glass with UV blocker.
- 100% preselection of cells
- Highest energy output achieved by careful processing and exact tuning of components (cp. „Power Check“ Report, Fraunhofer ISE)
- State of the art manufacturing technology and certified quality management (ISO 9001) guarantee best quality of products „made in Germany“.
- Specially developed aluminium frame; rapid and versatile fitting with patented Profilink mounting system; recessed retaining elements for attractive appearance
- Very narrow selection limits of only +/- 2 W (1.3%) remove the need to preselect panels.
- Calibration modules for output measurement regularly tested at Fraunhofer Institute for Solar Energy Systems

### Dimensions

<b>Series SF 150/2A</b>	Alu frame
L x W (mm)	1466 x 801
Thickness (mm)	35
Weight (kg)	14.5

### Qualifications/Certificate

Guideline 89/336/EWG (CE)  
 Guideline 73/23/EWG (CE)  
 Certified according to IEC 61215



**Solarsystem Distributor**  
**Schoenau**  
 Aktiengesellschaft  
 Düppelstrasse 1 14163 Berlin  
 Tel.: 030 / 79 6 79 12 Fax: 030 / 795 80 57  
[www.schoenau-ag.de](http://www.schoenau-ag.de)



# Module data Solar-Fabrik Series SF 150/2A

Type of module	SF 150/2A-146	SF 150/2A-150	SF 150/2A-154
Solar cells per module (monocrystalline)	66	66	66
Max. system voltage	840 V	840 V	840 V

## Electrical data under STC (Standard Test Conditions: 1000 W/m<sup>2</sup>, 25°C, AM 1.5)

Nominal Power*	P <sub>max</sub>	146 W	150 W	154 W
Sorting limits		+/- 2.0 W	+/- 2.0 W	+/- 2.0 W
Voltage approx.	U <sub>MPP</sub>	32.40 V	32.60 V	32.80 V
Open circuit voltage approx.	U <sub>OC</sub>	39.90 V	40.20 V	40.50 V
Current approx.	I <sub>MPP</sub>	4.50 A	4.60 A	4.69 A
Short circuit current approx.	I <sub>SC</sub>	5.00 A	5.10 A	5.21 A

## Electrical data at 800 W/m<sup>2</sup>, NOCT, AM 1.5

Performance at MPP approx.	P <sub>max</sub>	105.42 W	108.31 W	111.20 W
Voltage approx.	U <sub>MPP</sub>	29.07 V	29.25 V	29.43 V
Open circuit voltage approx.	U <sub>OC</sub>	36.27 V	36.54 V	36.81 V
Current approx.	I <sub>MPP</sub>	3.63 A	3.71 A	3.78 A
Short circuit current approx.	I <sub>SC</sub>	4.02 A	4.10 A	4.19 A

At an incident solar irradiance level of 200 W/m<sup>2</sup> and 25°C, efficiency is decreased by approx. 6.5% compared with the efficiency measured at STC.

## Temperature data

Temperature coefficient voltage	T <sub>K</sub> (U <sub>OC</sub> )	-141 mV/K
Temperature coefficient current	T <sub>K</sub> (I <sub>SC</sub> )	0.60 mA/K
NOCT		48°C +/- 3K

## Further information

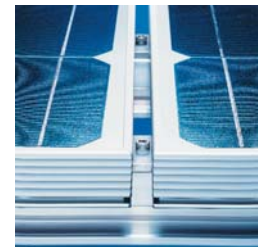
High voltage test	test voltage 3200 V <sub>DC</sub> /max. 60µA
Hail resistance**	up to 25 mm diameter at 23 m/s
Storm resistance**	Wind speed up to 130 km/h = 800 Pa and safety factor 3
Snow load**	without frame: up to 1.2 kN/m <sup>2</sup> and safety factor 2 framed: up to 2.7 kN/m <sup>2</sup> and safety factor 2

\* (+/- 5% tolerance of measurement)

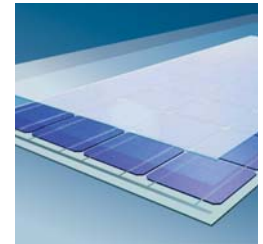
\*\* in combination with our patented mounting system Profilink

Subject to technical modification.

**Warranty** on electrical performance, 25 years according to our additional terms of warranty, which we will be glad to send you.



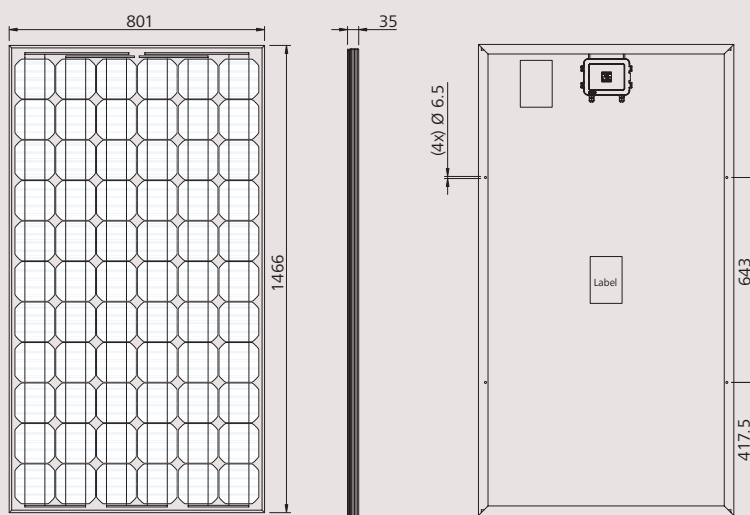
Efficient mounting system Profilink



## Module assembly:

Panel construction:  
Specially hardened low-iron glass, light-permeable ethyl-vinyl acetate (EVA) film, solar cells, EVA, Tedlar backing film.

Certified by VDE according to DIN EN ISO 9001: 2000, Reg.Nr. 5002983/QM/11.2003 / DIN EN ISO 14001:1996, Reg.Nr. 5002983/UM/11.2003



SF 150/2A framed

**Solarsystem Distributor**  
**Schoenau**  
Aktiengesellschaft  
Düppelstrasse 1 14163 Berlin  
Tel.: 030 / 79 6 79 12 Fax: 030 / 795 80 57  
[www.schoenau-ag.de](http://www.schoenau-ag.de)



Solar-Fabrik AG  
Munzinger Straße 10  
79111 Freiburg / Germany  
Tel. +49-(0)761-4000-0  
Fax +49-(0)761-4000-199  
[www.solar-fabrik.de](http://www.solar-fabrik.de)