



ZXP6 | 60 Cells

Polycrystalline PV module 235-260 Watt



Made with selected materials and components to grant quality, duration, efficiency and thorough outputs, the 60-celled polycrystalline modules by ZNSHINE SOLAR (power output 235 up to 260 Wp, black modules up to 250 Wp) represent a highly flexible solution for diverse installation types, from industrial rooftop plants to small home PV-systems or large ground surfaces. This allows you to produce clean energy whilst reducing your energy bill.

ZNSHINE SOLAR's 60-celled polycrystalline solar modules are tested and approved by internationally acknowledged laboratories, so that we can offer our customers a reliable and price-quality optimized product.



High Efficiency

High module efficiency up to 15.98%



25 Years Output Warranty

Insured output warranty of 25 years



5400 Pa

Certified to withstand extreme static loads of 5400 Pa



PID free

Free from PID (Potential Induced Degradation)



Extensive green certificates

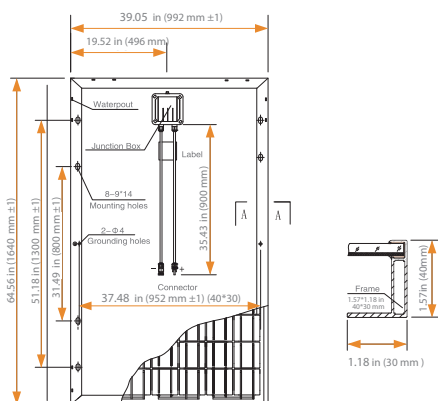


Production made in Japan

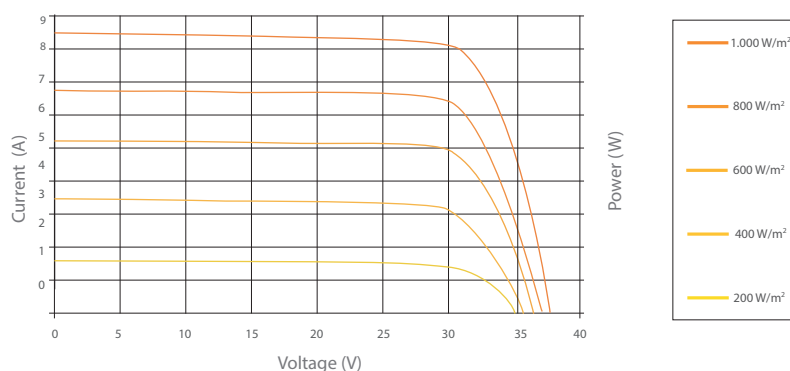
Znshine PV-TECH, Inc
400 Oyster Point Blvd, Suite 326
South San Francisco, CA 94080
For more information please visit our website www.znshinesolar.com

Tel East Coast (+1) 416-491-0799
Tel West Coast (+1) 415-341-7248
E-Mail: usa@znshinesolar.com

Dimensions of the PV module



I-V Curves of the PV module



Electrical data¹

	ZXP6-60-235/P	ZXP6-60-240/P	ZXP6-60-245/P	ZXP6-60-250/P	ZXP6-60-255/P	ZXP6-60-260/P
Nominal Power Watt P_{max} (W_p)	235	240	245	250	255	260
Power Output Tolerance P_{max} (%)	0 ~ +3	0 ~ +3	0 ~ +3	0 ~ +3	0 ~ +3	0 ~ +3
Maximum Power Voltage V_{MPP} (V)	29.55	29.75	29.95	30.15	30.33	30.53
Maximum Power Current I_{MPP} (A)	7.95	8.07	8.18	8.29	8.41	8.52
Open Circuit Voltage V_{oc} (V)	37.38	37.55	37.72	37.89	38.08	38.26
Short Circuit Current I_{sc} (A)	8.39	8.47	8.53	8.61	8.65	8.72
Module Efficiency η_m (%)	14.44	14.75	15.06	15.37	15.67	15.98
Cell Efficiency η_c (%)	16.26	16.64	17.02	17.44	17.79	18.17

Mechanical data

Solar cells	Poly 6.14 x 6.14 in (156 x 156 mm)
Cells orientation	60 (6 x 10)
Module dimensions	64.5 x 39 x 1.57 in (1640 x 992 x 40 mm)
Weight	43.0 lbs (19.5 kg)
Glass	High transparency, low iron, tempered glass 0.13 in (3.2 mm) / AR-coating
Frame	Anodized aluminum alloy. Frame and backside in alu or black
Junction box	≥ IP 65
Cables/ connectors	0.006 in ² (4 mm ²), 35.4 in (900 mm), MC4-compatible
Number of diodes	3

Warranty information

10 years workmanship warranty

10 years at 90% power output

+ further 15 years warranty at 80 % power output

¹ Measurement Tolerance STC: $\pm 3\%$ (P_{max}), $\pm 10\%$ (V_{max} , I_{MPP} , V_{oc} , I_{sc}). Values at Standard Test Conditions STC (Air Mass AM 1.5, Irradiance 1000 W/m², Cell Temperature 25 °C) | Remark: please read safety and installation instructions before using the product | Subject to change without prior notice © ZNSHINE SOLAR 2014 | Version: ZXP6-72-1411.E.U5

Temperature ratings

Nominal Operating Cell Temperature 45°C (±2°C)

Temperature coefficient of P_{MPP} -0.42 %/K

Temperature coefficient of V_{oc} -0.33 %/K

Temperature coefficient of I_{sc} 0.06 %/K

Working conditions

Maximum system voltage	1000 V DC (UL)
Operating temperature	-40 up to +85 °C
Maximum series fuse	15 A
Maximum load (snow/wind)	5400 Pa / 2400 Pa
Fire rating (UL 1730)	Class C

Packaging information

Modules per box 26 pcs. (1.57 in)

Modules per 40'HQ container 784 pcs. (1.57 in)

